



Riverstone Public School Traffic Management Plan

School parking lots, including ours, can be incredibly busy places during arrival and dismissal times. The high volume of activity can lead to traffic, unsafe conditions and potential injury. Ensuring that no child gets hurt is the primary concern for our staff, but this requires everyone's participation, including parents and care givers.

We have developed a traffic plan for our school property which details the guidelines that we are asking all users to follow. Following this plan will help to reduce traffic congestion and create a safer environment for our students, staff and visitors. Please see the details of the plan in the diagram below.

We will be monitoring the pick-up / drop off zones and communicating these guidelines to all users and ask that you all respect our presence and guidance. We also welcome any parents / care givers who are available to assist us with monitoring during peak times, for information on volunteering for this please contact the school.

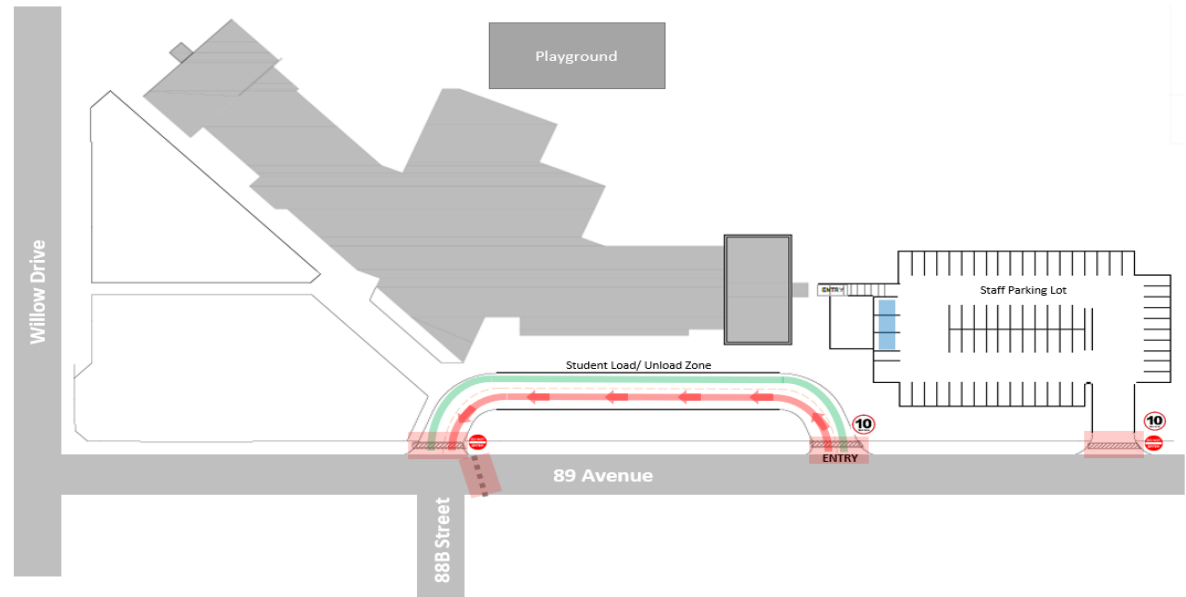
Reducing Traffic at the School

In addition to our traffic plan, here are some other considerations that can help reduce traffic congestion at the school:


Walking to school

Most students who are not eligible to ride the bus live within 2.4kms or less of the school which averages to about a 20-25-minute walk. Try out the route with your child on a weekend and time yourself, you may be surprised in how little time it takes to get here.

- If you live close to the school, consider walking or biking with your child to school. If they are old enough, encourage them to walk or bike with a friend. Not only is this a healthy alternative, but it also results in fewer vehicles at the school during peak times.
- If you must drive your child to school, park on a nearby street and walk with your child the remainder of the way.



Student Load / Unload Zone

- Used for children pick-up/ drop-off only, no parking, 5-minute stopping only.
 - The designated pick-up/ drop-off location runs along the right-hand curb of the lane only.
 - Children can safely exit onto sidewalks and walk directly into the school.
 - Always pick up students at the right-hand curb and do not encourage them to cross the road unless at a crosswalk
 - There is **NO STOPPING** on the left-hand side of the lane, the lane is through traffic only.
 - Always use turning signals when entering and exiting the curbs for pick-up and drop-off and check blind spots carefully.
 - This loop is one-way traffic only
-  10/km hour is the speed limit on school property

Visitor Parking

- There is no visitor parking at Riverstone School, other than the 3 wheelchair parking stalls located in the staff parking lot (permit required).
- During busier times (start/ dismissal) drivers can park on the street in designated areas

Crosswalk

- No parking within 5M of crosswalk
- Always yield to pedestrians

Help each other out.

- Find others in your neighborhood who are interested in taking turns driving children to and from school. This helps to reduce traffic around the school.

Ride the bus

- Students eligible to ride the school bus should take the bus whenever possible. It's an easy and safe way to get to and from school while also reducing the number of vehicles during peak times.

Drive Safely

- If you choose to drive your child to school, remember to drive slowly and safely in the neighborhood and around the school. Children are unpredictable and may be difficult to see.

- Don't rush. Plan ahead and allow enough time to get your child to school.
- Drop off your child in designated areas or on the school side of the street so that they can use sidewalks and crosswalks to safely get to school.
- Yield to children walking around the school.
- Pay attention. Do not text or use your handheld phones while driving.
- Do not park or block private driveways or businesses. Always discuss what's acceptable with property owners.
- Know and obey all speed limits. 30 km / hr. in school zones.